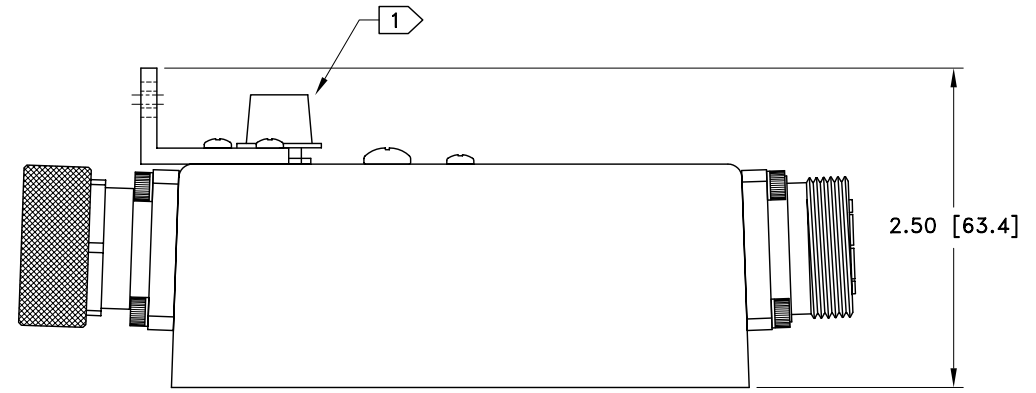
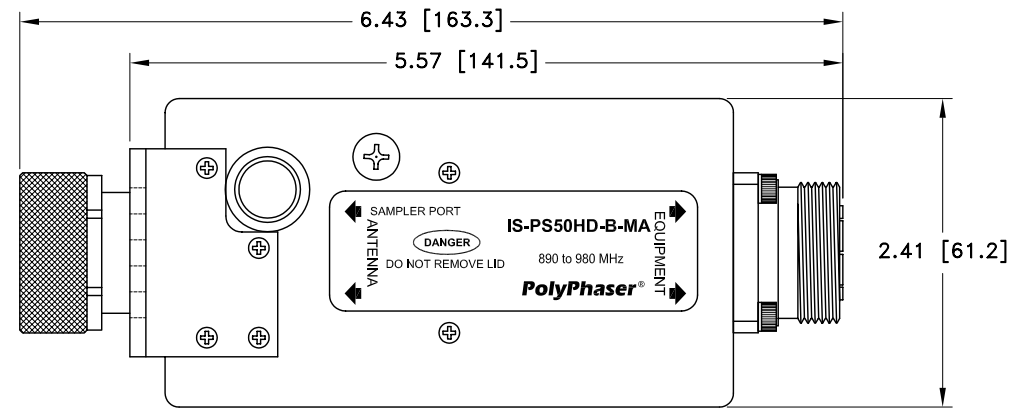
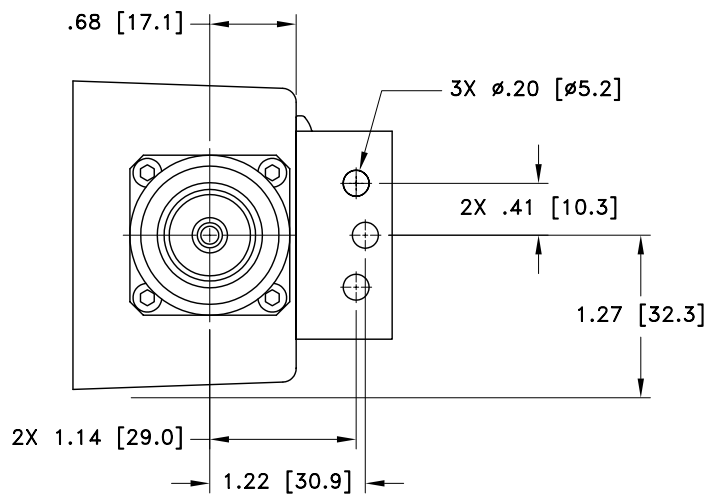


ALL DESIGN, OPERATIVE AND PROCESS DATA PERTAINING TO THE ARTICLE SHOWN ON THIS SHEET IS THE PROPERTY OF POLYPHASER CORPORATION. THE INFORMATION IS NOT TO BE COPIED, REPRODUCED, REVEALED TO OR APPROPRIATED BY OTHERS WITHOUT THE EXPRESS WRITTEN CONSENT OF POLYPHASER CORPORATION.

REVISIONS				
REV LTR	DATE	ENG	MKTG	Q.A.
B	03/02/01 _{IB}	KCB	PH	RM
C	06/22/01 _{JC}	JJ	PH	LJ
D	08/09/01 _{IB}	LC	SD	LJ



MAXIMUM CHARACTERISTICS

APPLICATION:

BULKHEAD MOUNT

FREQUENCY RANGE:

890 TO 980MHz

TURN-ON:

1200Vdc Vt: 1800V

VSWR:

≤1.1:1 OVER FREQUENCY RANGE

INSERTION LOSS:

≤0.1dB OVER FREQUENCY RANGE

POWER:

750W SINGLE CHANNEL

THROUGHPUT ENERGY:

≤10μJ FOR 3kA, 8/20μs WAVEFORM

OPERATING TEMPERATURE:

-25°C TO +50°C

STORAGE TEMPERATURE:

-25°C TO +50°C

RELATIVE HUMIDITY:

90% @ +40°C

VIBRATION:

1G AT 5Hz TO 100Hz

CUSTOMER APPROVAL: _____ DATE: _____

ALL DIMENSIONS SHOWN ABOVE ARE FOR REFERENCE ONLY.

NOTES:

1) PROTECTIVE CAP OVER CONNECTOR.

DRAFTER C. GASPARINI	DATE 03/13/97	PolyPhaser® <small>P.O. BOX 9000, MINDEN, NV 89423-9000 (775) 782-2511 FAX (775) 782-4476</small> DWG NO/PART NO/DESCRIPTION IS-PS50HD-B-MA CUSTOMER PRINT			
MECH ENGINEER O. AKDAG	DATE 04/18/97				
ELEC ENGINEER K. BARTEL	DATE 04/28/97				
MARKETING - - - - -	DATE - - - - -				
QUALITY DEPT R. MATHEUS	DATE 04/28/97	CAGE CODE 61114	FILE NAME -C1	SCALE 1/1.5	SHEET 1 OF 1