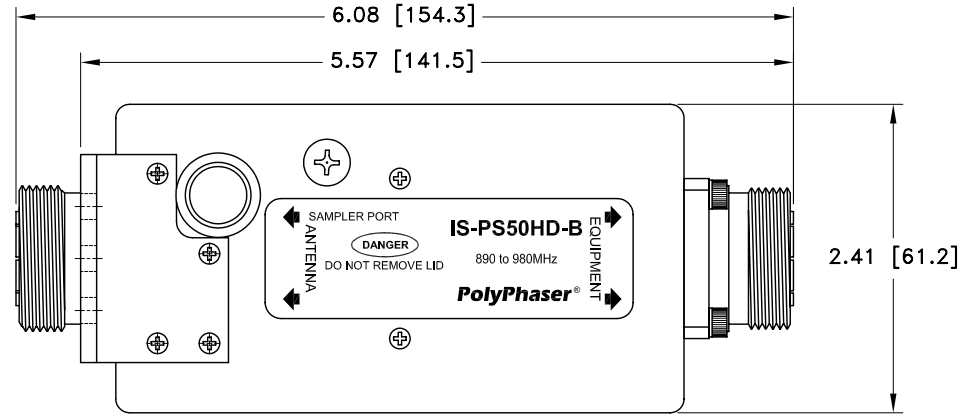
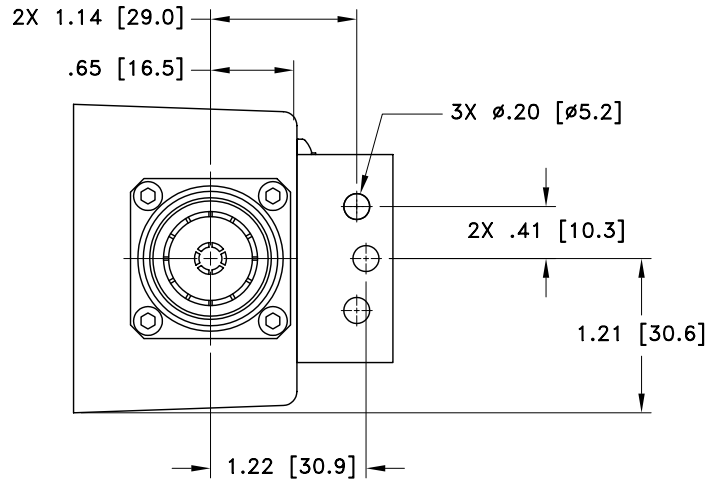


ALL DESIGN, OPERATIVE AND PROCESS DATA PERTAINING TO THE ARTICLE SHOWN ON THIS SHEET IS THE PROPERTY OF POLYPHASER CORPORATION. THE INFORMATION IS NOT TO BE COPIED, REPRODUCED, REVEALED TO OR APPROPRIATED BY OTHERS WITHOUT THE EXPRESS WRITTEN CONSENT OF POLYPHASER CORPORATION.

REVISIONS				
REV LTR	DATE	ENG	MKTG	Q.A.
A	11/14/97	KCB	--	RM
B	06/21/01 _{JC}	RCD	PH	RM
C	08/09/01 _{IB}	BL	SD	LJ



MAXIMUM CHARACTERISTICS

APPLICATION:
BULKHEAD MOUNT

FREQUENCY RANGE:
890 TO 980MHz

TURN-ON:
1200Vdc Vt: 1800V

VSWR:
≤1.1:1 OVER FREQUENCY RANGE

INSERTION LOSS:
≤0.1dB OVER FREQUENCY RANGE

POWER:
750W SINGLE CHANNEL

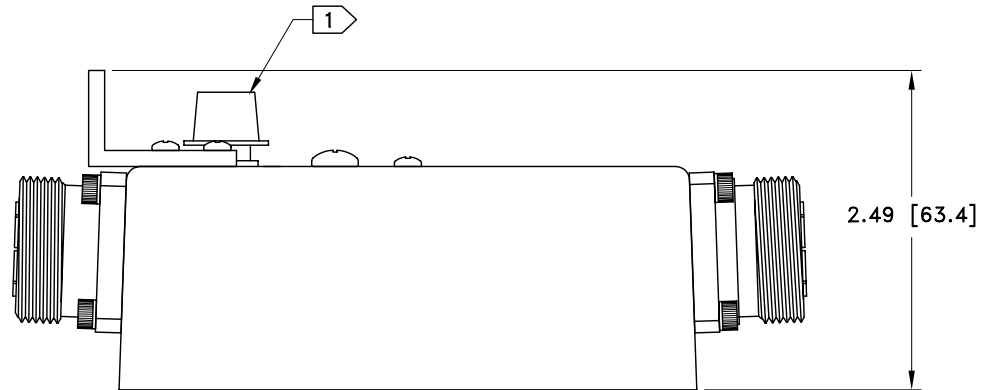
THROUGHPUT ENERGY:
≤10μJ FOR 3kA, 8/20μs WAVEFORM

OPERATING TEMPERATURE:
-25°C TO +50°C

STORAGE TEMPERATURE:
-25°C TO +50°C

RELATIVE HUMIDITY:
90% @ +40°C

VIBRATION:
1G AT 5Hz TO 100Hz



CUSTOMER APPROVAL: _____ DATE: _____

ALL DIMENSIONS SHOWN ABOVE ARE FOR REFERENCE ONLY.

DRAFTER C. GASPARINI	DATE 06/24/97	PolyPhaser® P.O. BOX 9000, MINDEN, NV 89423-9000 (775) 782-2511 FAX (775) 782-4476 DWG NO/PART NO/DESCRIPTION IS-PS50HD-B CUSTOMER PRINT			
MECH ENGINEER O. AKDAG	DATE 07/02/97				
ELEC ENGINEER K. BARTEL	DATE 07/01/97				
MARKETING -----	DATE -----				
QUALITY DEPT R. MATHEUS	DATE 07/02/97	CAGE CODE 61114	FILE NAME -C1	SCALE 1/1.5	SHEET 1 OF 1

NOTES:

1) PROTECTIVE CAP OVER CONNECTOR.