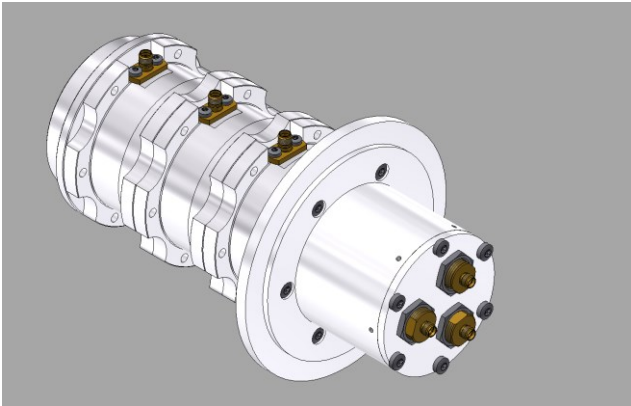


Multi Channel Rotary Joint || BN 532356



**Radio frequency channel characteristics**

Channel designation	Channel 1	Channel 2	Channel 3
Interface type / material / surface finish	3.5mm-f	3.5mm-f	3.5mm-f
Frequency range	8.6 to 10.6 GHz	8.6 to 10.6 GHz	8.6 to 10.6 GHz
Peak power capability	1 kW	1 kW	1 kW
Average power capability	30 W	30 W	10 W
VSWR, max. / typ.	1.5 / 1.3	1.5 / 1.3	1.5 / 1.3
VSWR variation over rotation, max. / typ.	0.05 / 0.02	0.05 / 0.02	0.05 / 0.02
Insertion loss, max. / typ.	1.0 dB / 0,8 dB	1.1 dB / 0,9 dB	1.4 dB / 1.2 dB
Insertion loss variation over rotation, max. / typ.	0.05 dB/ 0.02 dB	0.05 dB/ 0.02 dB	0.05 dB/ 0.02 dB
Phase variation over rotation, max. / typ.	1 deg. / 0.5 deg.	1 deg. / 0.5 deg.	1 deg. / 0.5 deg.
Isolation, min. / typ.	60 dB / 70 dB		

**Mechanical data**

Rotating speed, max. / nominal	150 rpm / 100 rpm
Life, min.	200 x 10 <sup>6</sup> revolutions
Torque (room / min. temperature), max.	0.25 Nm / 1.0 Nm @ start-up 0.25 Nm / 1.0 Nm @ rotation
Interface loads, max.	no loads allowed
Case material	aluminum alloy
Case surface finish	chromate conversion coat per MIL-DTL-5541 type 1 or type 2
IP protection level	IP40 per EN 60529 (all interfaces connected with appropriate gaskets)
Weight, approx.	2.8 kg
Marking	adhesive label

## Multi Channel Rotary Joint || BN 532356

**Environmental conditions**

<b>Operation</b>	
Application	ground, fixed
Ambient temperature range	-55 °C to +71 °C
Relative humidity, max.	95% (non-condensing)
<b>Storage</b>	
Ambient temperature range	-55 °C to +85 °C
Relative humidity, max.	95% (non-condensing)

**Applicable documents**

Drawing	532356-0E, Issue A
Product manual	M36066
Technical information	"Rotary Joints – Glossary", Technical Document TD-00021, Spinner GmbH