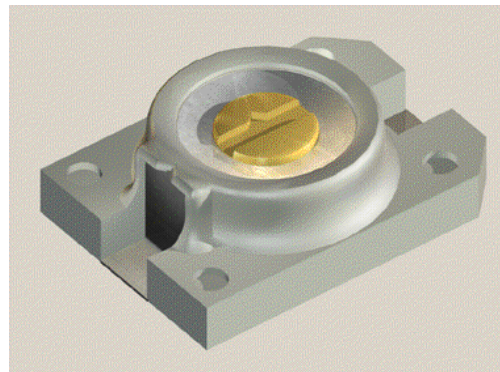


High Voltage Chip Trim Ceramic Trimmer Capacitors AT 03HV00 SERIES

SURFACE MOUNT TRIMMER CAPACITORS, ROHS COMPLIANT

DESCRIPTION

Very compact package type
 Ceramic dielectric
 Special design for reflow soldering use
 Rated voltage **350 VDC** (test **770 VDC**)
 Low temperature coefficient
 Low capacitance drift
 Very stable over time
 Terminals are **pure tin plated**
 High resonance frequency and very good Q
 Special design for easy vacuum pickup
 Delivered on 12 mm tape and reel
RoHS compliant
Maximum Soldering Temperature 265°C, 3 s Max



APPLICATIONS

High power radio transmission
 Power amplifier for cellular base station
 Amplifier for cable TV

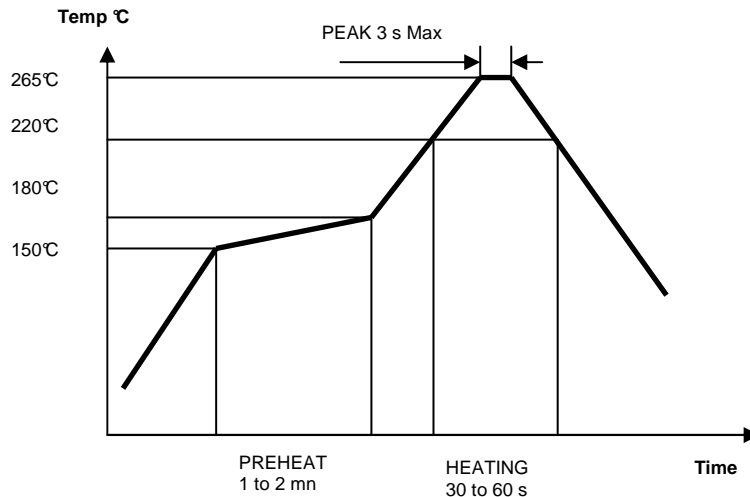
I. ELECTRICAL SPECIFICATIONS

P/N	AT 03HV03 ROHS	AT 03HV06 ROHS	AT 03HV08 ROHS	AT 03HV10 ROHS	AT 03HV15 ROHS	AT 03HV20 ROHS
From below	1.5	2.0	3.0	2.0	3.0	4.5
Capacitance range (pF)	+50%	+50%	+50%	+50%	+50%	+50%
To above	3.0 ₋₀	6.0 ₋₀	8.0 ₋₀	10.0 ₋₀	15.0 ₋₀	20.0 ₋₀
Working Voltage(VDC)	350					
Withstanding Voltage(VDC)	770					
Working Temp. range	-40°C to +85°C					
Temp. Coeff. (ppm/°C)	0+/-200	0+/-300	-750+/-500	0+/-300	0+/-500	0+/-500
Capacitance drift (pF)	0.1 Max	0.1 Max	0.2 Max	0.3 Max	0.4 Max	0.5 Max
Setting drift	<1%					
Typical Self-Resonance Frequency at CMax (GHz)	2.0	1.4	1.2	1.1	0.9	0.8
Insulation Resistance (MΩ)	10000 min					
Q @ 1 Mz, Cmax	500 min					

High Voltage Chip Trim Ceramic Trimmer Capacitors AT 03HV00 SERIES

SURFACE MOUNT TRIMMER CAPACITORS, ROHS COMPLIANT

Recommended reflow solder temperature profile
Maximum Soldering Temperature 265°C MAX



V. PACKAGING

Parts are delivered :

- on tape and reel in 12 mm width carrier tape in quantities of 1 kp on 7 inches reel
- in bulk for quantity lower than 1 kp

VI. HOW TO ORDER

Parts on tape and reel :

Reference **R2** **RoHS**

Example

AT 03HV03 R2 RoHS

Parts in quantity < 1 kp

Reference **RoHS**

Example

AT 03HV10 RoHS

VII. TUNING

Recommended Tuning Tool reference: AT 8777

When tuning, do not apply an axial force higher than 1.5 N (150 g)

VIII. STORAGE CONDITIONS

Do not store components under direct sunlight or in dewy environment, and in corrosive condition. Before use, store components under condition of -10°C to +40°C and humidity of 75% RH Max. It is recommended to use components within 6 months after delivery

TEMEX – CERAMICS, PARC INDUSTRIEL BERSOL 1, VOIE ROMAINE, 33600 PESSAC, France
 TEL +33(0)5 56 46 66 66 FAX +33(0)5 56 36 31 98 www.temex-ceramics.com