



# The Custom Interconnect Leader

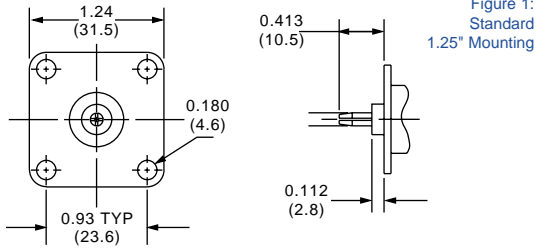


Figure 1:  
Standard  
1.25" Mounting

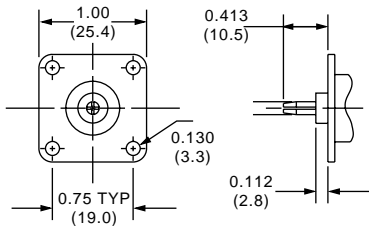


Figure 2:  
Optional  
1" Mounting

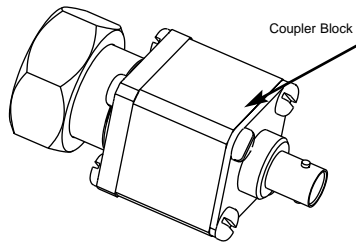


Figure 3:  
Male to Female  
Adapter

TRU Corporation offers QC Series connectors for military and commercial customers with a wide variety of custom and standard RF coaxial solutions. These "quick change" RF connectors are designed for use with high power testing and monitoring equipment, specifically wattmeters. With these connectors, on-site connector changes are done simply by removing the screws from the base plate and attaching the connector style that matches the equipment you're testing. As a result of the consistent QC end, changes can be made without affecting the consistency of test results. They represent a quick and easy way to match your testers and equipment without performance degrading adapters. Standard mounting panels are 1.25" square (figure 1). Special 1" panel version (figure 2) are also available for the following models: UHF, BNC, N, and TNC. (See drawings inside for model numbers.) Other models are available with 1" panel, per customer request. Inter-series adapters can be made by combining QC adapters with the female-to-female coupler block (figure 3). Additional custom configurations can also be designed and manufactured. Contact TRU for a manufacturer's cross-reference list.

For leading-edge engineering and custom product designs, look to TRU. Since 1951, we have been providing our customers with quality and cost effective solutions for all of their interconnect applications. We maintain the highest quality standards and manufacture all our products at our modern facility located in Peabody, Massachusetts. Contact your Customer Service Representative today or visit [www.trucorporation.com](http://www.trucorporation.com) to see why we are "The Custom Interconnect Leader".

Please note that the products displayed are only a sampling of our designs.

## ELECTRICAL

- Nominal Impedance: 50 ohms
- Frequency Range: DC to 7 GHz
- Voltage Rating: 2,700 volts rms
- Dielectric Withstanding Voltage: 4,000 volts rms
- Insulation Resistance: 10,000 megohms
- VSWR: 1.30 max DC-7GHz
- Intermodulation: -155 dBc

## MECHANICAL

- Mating Characteristics: per IEC 169-4 or DIN 47223 as applicable.
- Connector Durability: 500 cycles min.
- Cable Attachment: Clamp

## ENVIRONMENTAL

- Temperature Range: -85°F to +329°F (-65°C to +165°C)
- Vibration: MIL-STD-202 Method 204 (Test Cond. B)
- Shock: MIL-STD-202 Method 213 (Test Cond. 1)
- Moisture Resistance: MIL-STD-202 Method 106
- Corrosion (salt spray): MIL-STD-202 Method 101 (Test Cond.B)

## MATERIAL / FINISHES

- Body: Brass, Silver or Nickel Plated
- Contacts (Inner): Female Beryllium Copper, Silver or Gold Plated
- Male Contacts (Outer): Brass, Silver or Gold Plated
- Contacts (Slotted): Plated
- Insulators: Teflon
- Gaskets & Seals: Silicone Rubber

Features listed are typical and may vary depending upon cable selection and application.

Please note that bold model numbers represent the product as shown.

Custom connectors can be manufactured to your own specifications.



Please note that the products displayed are only a sampling of our designs.

Build Your Own Connector at [www.trucorporation.com](http://www.trucorporation.com)