

SPECIFICATIONS

ELECTRICAL

FREQUENCY RANGE _____ DC - 18 GHz

VSWR

DC - 4 GHz	1.05:1
4 - 8 GHz	1.10:1
8 - 12.4 GHz	1.15:1
12.4 - 18 GHz	1.20:1

IMPEDANCE _____ 50 OHMS

TEMPERATURE RANGE (°C) _____ 4 KELVIN TO +125
150 STORAGE

POWER (AVG) _____ 2 WATTS
POWER DERATES LINEARLY FROM +45°C TO <10% @+125°C

MECHANICAL

INNER CONDUCTOR _____ BeCu PER ASTM B196 & B197.

OUTER CONDUCTOR _____ C101 COPPER

DIELECTRIC _____ TEFLON PER ASTM D1710.

FINISH

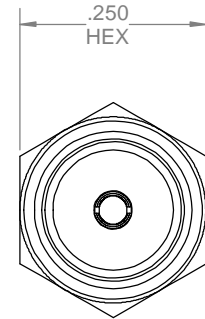
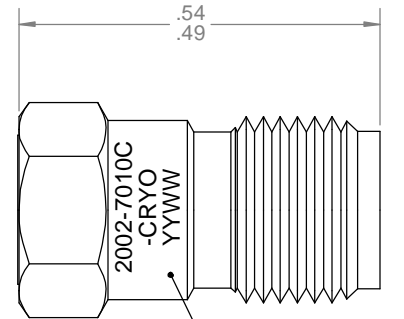
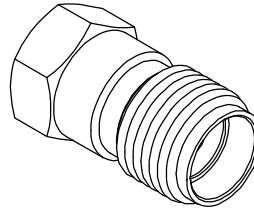
INNER CONDUCTOR _____ GOLD PLATED PER MIL-PRF-39012.

HOUSING/COUPLING NUT _____ GOLD PLATED WITH WITE BRONZE
UNDERPLATE (NO NICKEL)

CONNECTOR INTERFACE COMPLIES WITH MIL-PRF-39012 AND MIL-STD-348
FOR SMA MATING CHARACTERISTICS.

MARKING

PART LOOKS LIKE PRODUCT IMAGE ABOVE.
PART MARKING ORIENTATION AND FORMAT AS SHOWN.
MARKING TO BE AS LARGE AS POSSIBLE, CLEAR AND READABLE.
YYWW EQUALS DATE CODE.



MARKING AREA
SEE NOTE

QTY.	PART NUMBER	DESCRIPTION	ITEM NO.
X	2002-7010C-CRYO	TERMINATION, SMA-f, DC-18GHz, 2W, CRYO	
1	TA-2002-7010CU-CRYO	ASSY, TERMINATION, SMA-f, DC-18GHz, 2W, CRYO, UNMARKED	1

DRAWING PRACTICES PER ANSI-Y14.5 MIL-STD-100 & 1000	UNLESS OTHERWISE SPECIFIED TOLERANCES IN:
DIMENSIONS ARE IN INCHES AND APPLY BEFORE / AFTER PROCESSING	DECIMALS INCH [MM]
SURFACE ROUGHNESS 63	.X" .05" [1.27]
FINISH:	.XX" .03" [.76]
SEE NOTES	.XXX" .010" [.25]
MATERIAL:	ANGLES ±0°30'
SEE NOTES	REMOVE ALL BURRS/SHARP W/ BREAK / R OF .003" TO .0005"
NOTE: THIS DRAWING INCORPORATES THIRD ANGLE PROJECTION.	UNLESS OTHERWISE NOTED DIAS CONCENTRIC <.003 T.I.R.
INTERPRET IAW ANSI Y14.5-1982	DO NOT SCALE PRINT

DRAWN MCCORMICK	DATE 4/20/21
CHECKED MCCORMICK	DATE 4/20/21
ENG. APPR. MES	DATE 4/20/21

THESE DRAWINGS AND
SPECIFICATIONS ARE THE PROPERTY
OF XMA CORP. OR OMNI SPECTRA
AND SHALL NOT BE REPRODUCED,
COPIED NOR USED - IN WHOLE OR IN
PART - AS A BASIS FOR THE
MANUFACTURE OR SALE OF OTHER
ITEMS WITHOUT THE EXPRESS
WRITTEN PERMISSION OF XMA CORP.



Phone: 603-222-2256 Fax: 603-222-2259
7 Perimeter Road, Manchester, NH 03103
TITLE

TERMINATION, SMA-f, DC-18GHz, 2W, CRYO

SIZE	CAGE CODE	DRAWING NUMBER	REV
B	3HT76	2002-7010C-CRYO	X3
SCALE	PLATED AREA SQ. IN	SHEET 1 OF 1	