

5

4

3

2

1

SPECIFICATIONS

ELECTRICAL
FREQUENCY _____ DC TO 18 GHz

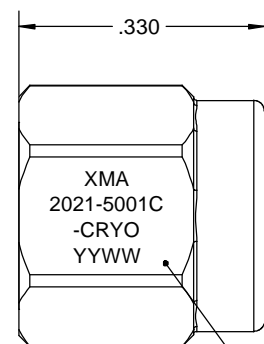
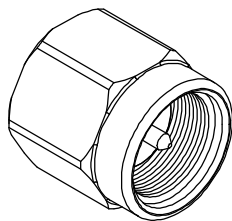
MECHANICAL
MATERIAL _____ BERYLLIUM COPPER

FINISH _____ NICKEL FREE GOLD PLATE

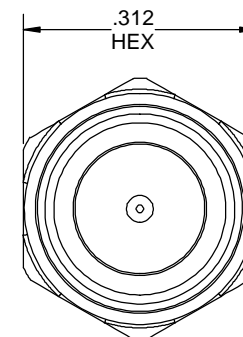
TEMPERATURE _____ 4 KELVIN TO +125°C

MARKING
PART LOOKS LIKE PRODUCT IMAGE.
PART MARKING ORIENTATION AND FORMAT AS SHOWN.
MARKING TO BE AS LARGE AS POSSIBLE, CLEAR, AND READABLE.
YYWW = DATE CODE.

PACKING
ITEMS SHALL BE INDIVIDUALLY BAGGED AND PLACED INTO A LARGER BAG.



MARKING AREA



| REVISIONS | | | | |
|-----------|---------------------|----------|---------|----------|
| REV | DESCRIPTION | ECO # | DATE | APPROVED |
| X1 | PRELIMINARY RELEASE | 21-NP033 | 5/11/23 | DEL |
| | | | | |
| | | | | |
| | | | | |

| QTY. | PART NUMBER | DESCRIPTION | ITEM NO. |
|------|-----------------------|------------------------------------|----------|
| X | 2021-5001C-CRYO | SMA-m, SHORT, CRYO | |
| 1 | TA-2021-5001-33U-CRYO | ASSY, SMA-m, SHORT, CRYO, UNMARKED | 1 |

| |
|---|
| DRAWING PRACTICES PER ANSI-Y-14.5 MIL-STD-100 & 1000 |
| DIMENSIONS ARE IN INCHES AND APPLY BEFORE / AFTER PROCESSING |
| SURFACE ROUGHNESS μINCHES |
| FINISH: |
| MATERIAL: |
| NOTE: THIS DRAWING INCORPORATES THIRD ANGLE PROJECTION. |
| INTERPRET IAW ANSI Y14.5-1982 |

| |
|---|
| UNLESS OTHERWISE SPECIFIED TOLERANCES IN: |
| DECIMALS INCH [MM] |
| .X" .05" [1.27] |
| .XX" .03" [.76] |
| .XXX" .010" [.25] |
| ANGLES ±0°30' |
| REMOVE ALL BURRS/SHARP W/ BREAK / R OF .003" TO .0005" |
| UNLESS OTHERWISE NOTED DIAS CONCENTRIC <.003 T.I.R. |
| DO NOT SCALE PRINT |

| | |
|----------------------|-----------------|
| DRAWN MCCORMICK | DATE 5/11/23 |
| CHECKED MCCORMICK | DATE 5/11/23 |
| ENG. APPR. DEL | DATE 5/11/23 |

THESE DRAWINGS AND
SPECIFICATIONS ARE THE PROPERTY
OF XMA CORP. OR OMNI SPECTRA
AND SHALL NOT BE REPRODUCED,
COPIED NOR USED - IN WHOLE OR IN
PART - AS A BASIS FOR THE
MANUFACTURE OR SALE OF OTHER
ITEMS WITHOUT THE EXPRESS
WRITTEN PERMISSION OF XMA CORP.



Phone: 603-222-2256 Fax: 603-222-2259
7 Perimeter Road, Manchester, NH 03103

| TITLE | | | |
|--------------------|-----------------------|-----------------|-----|
| SMA-m, SHORT, CRYO | | | |
| SIZE | CAGE CODE | DRAWING NUMBER | REV |
| B | 3HT76 | 2021-5001C-CRYO | X1 |
| SCALE | PLATED AREA SQ. IN | SHEET 1 OF 1 | |