

5

4

3

2

1

SPECIFICATIONS

ELECTRICAL
FREQUENCY _____ DC TO 18 GHz

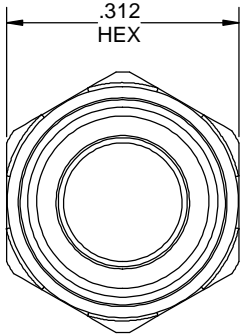
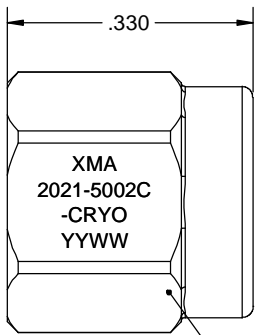
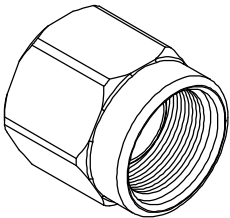
MECHANICAL
MATERIAL _____ BERYLLIUM COPPER

FINISH _____ NICKEL FREE GOLD PLATE

TEMPERATURE _____ 4 KELVIN TO +125°C

MARKING
PART LOOKS LIKE PRODUCT IMAGE.
PART MARKING ORIENTATION AND FORMAT AS SHOWN.
MARKING TO BE AS LARGE AS POSSIBLE, CLEAR, AND READABLE.
YYWW = DATE CODE.

PACKING
ITEMS SHALL BE INDIVIDUALLY BAGGED AND PLACED INTO A LARGER BAG.



MARKING AREA

REVISIONS				
REV	DESCRIPTION	ECO #	DATE	APPROVED
X1	PRELIMINARY RELEASE	21-NP033	5/11/23	DEL

QTY.	PART NUMBER	DESCRIPTION	ITEM NO.
X	2021-5002C-CRYO	SMA-m OPEN, CRYO	
1	TA-2021-5002-33U-CRYO	ASSY, SMA-m OPEN, CRYO, UNMARKED	1

DRAWING PRACTICES PER ANSI-Y14.5 MIL-STD-100 & 1000

DIMENSIONS ARE IN INCHES AND APPLY BEFORE / AFTER PROCESSING

SURFACE ROUGHNESS μ INCHES **63**

FINISH:

MATERIAL: **BERYLLIUM COPPER**

NOTE: THIS DRAWING INCORPORATES THIRD ANGLE PROJECTION.

INTERPRET IAW ANSI Y14.5-1982

UNLESS OTHERWISE SPECIFIED TOLERANCES IN:

DECIMALS	INCH	[MM]
.X"	.05"	[1.27]
.XX"	.03"	[.76]
.XXX"	.010"	[.25]

ANGLES $\pm 0^{\circ}30'$

REMOVE ALL BURRS/SHARP W/ BREAK / R OF .003" TO .0005" UNLESS OTHERWISE NOTED DIAS CONCENTRIC <.003 T.I.R.

DO NOT SCALE PRINT

DRAWN **MCCORMICK** DATE **5/11/23**

CHECKED **MCCORMICK** DATE **5/11/23**

ENG. APPR. **DEL** DATE **5/11/23**

THESE DRAWINGS AND SPECIFICATIONS ARE THE PROPERTY OF XMA CORP. OR OMNI SPECTRA AND SHALL NOT BE REPRODUCED, COPIED NOR USED - IN WHOLE OR IN PART - AS A BASIS FOR THE MANUFACTURE OR SALE OF OTHER ITEMS WITHOUT THE EXPRESS WRITTEN PERMISSION OF XMA CORP.

XMA OMNI SPECTRA

Phone: 603-222-2256 Fax: 603-222-2259
7 Perimeter Road, Manchester, NH 03103

TITLE **SMA-m, OPEN, CRYO**

SIZE B	CAGE CODE 3HT76	DRAWING NUMBER 2021-5002C-CRYO	REV X1
SCALE	PLATED AREA SQ. IN	SHEET 1 OF 1	

5

4

3

2

1